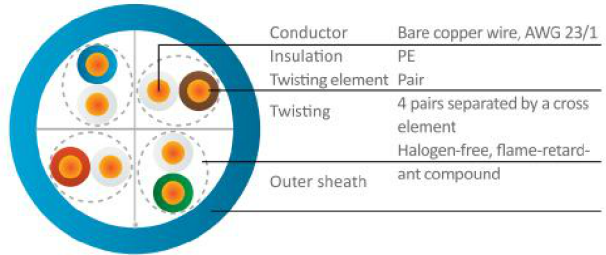
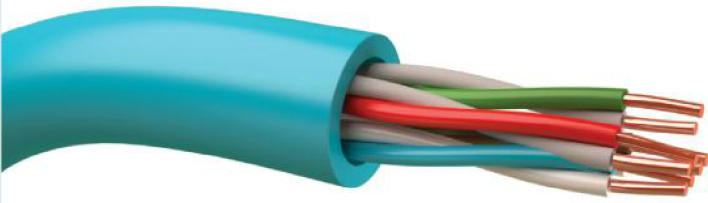


COPPER CABLES



C5e U/UTP SOLID CABLE-100MHZ

Structure

24 AWG solid copper conductors
PE insulation
FR PVC/PE/LSZH jacket

Standard

ANSI/TIA/EIA -568-B.2 (100 MHz)
ISO/IEC 61156-5
EN 50173
EN 50288-3-1
ISO/IEC 11801

Applications:

Installation cable for generic cabling systems acc. ISO/IEC 11801 and EN 50173 (2. edition)
Ideal for all applications of classes D up to 1 GbE acc. IEEE802.3 ab, VoIP, PoE

Fire behavior

Flame retardant: acc. to IEC 60332-1-2
Halogen acid gas emission: acc. to IEC 60754-2
Smoke density: acc. to IEC 61034, Calorific value (MJ/m): 0.6(Sx) /1.2(Dx) (approx.)

Mechanical characteristics

Bending radius: During installation: 8 x overall Diameter (min.) & after installation: 4 x overall Diameter (min.)
Tensile strength: 85 (max.), Crush (N/100 mm): 1,000
Impact (number of shocks): 10

Chemical characteristics

Free of hazardous substances acc. to RoHS 2002/95/EG

Thermal characteristics

Temperature range for fixed installation: -20°C up to +60°C
Temperature range for mobile operation: 0°C up to +50°C

Frequency	Attenuation dB/100m		NEXT dB		PS-NEXT dB		ACR dB@100m		PS-ACR dB@100m		EL-FEXT dB@100m		PS-ELFEXT dB@100m		RL dB	
	typ.	Cat. 5 max.*	typ.	Cat. 5 min.*	typ.	Cat. 5 min.*	typ.	Cat. 5 min.*	typ.	Cat. 5 min.*	typ.	Cat. 5 min.*	typ.	Cat. 5 min.*	typ.	Cat. 5 min.*
1	2	2.1	75	65	72	62	73	63	70	60	89	64	86	61	24.8	-
4	3.1	4	69	56	66	53	66	52	63	49	84	52	81	49	28.6	23
10	5.1	6.3	62	50	59	47	57	44	54	41	76	44	73	41	33.3	25
16	7	8	58	47	55	44	51	39	48	36	70	40	67	37	34.3	25
31.25	9.7	11.4	53	43	50	40	44	31	41	28	63	34	60	31	33.9	23.6
62.5	13.2	16.5	49	38	46	35	36	22	33	19	58	28	55	25	31.3	21.5
100	17.6	21.3	45	35	42	32	28	14	25	11	52	24	49	21	27.7	20.1

Part Number	Size	Jacket type	AWG	Reel	Color sheath
CC5E0001	4P	PVC	24	305m	BLUE, RAL 5015
CC5E0011	4P	LSZH	24	305m	BLUE, RAL 5015

* EN 50288-4-1(2004)/ IEC 61156-5(2002)

